



SRH

Horizontal Coil steam boiler, for rapid steam production.
Steam output from 100 Kg/h up to 4.000 Kg/h from 12 up to 30 bar.



The steam generator MELGARI , model SRH is a forced circulation steam boiler according to which the water is forced by one or many pumps and circulates into the pipe (coil) that represents the heating surface.

It has been especially designed for the combustion of both liquid and gaseous fuels and is supplied with the accessories according to the currently norms for an automatic functioning.

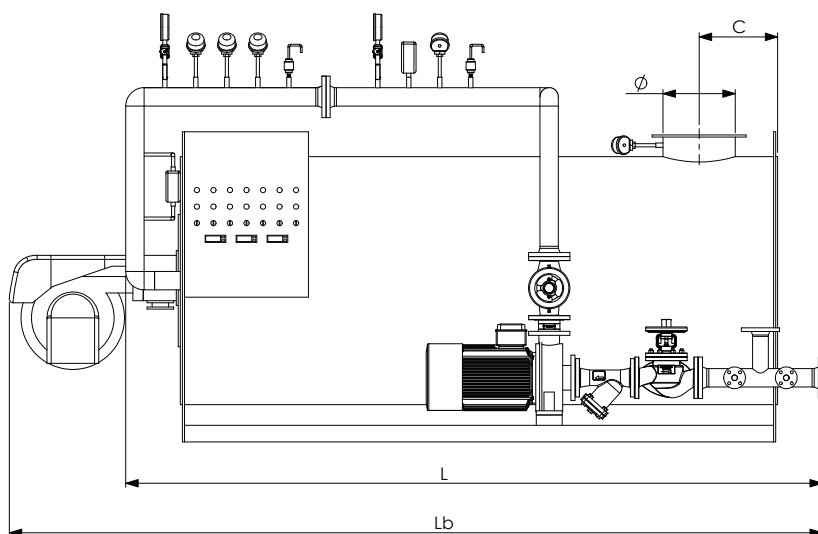
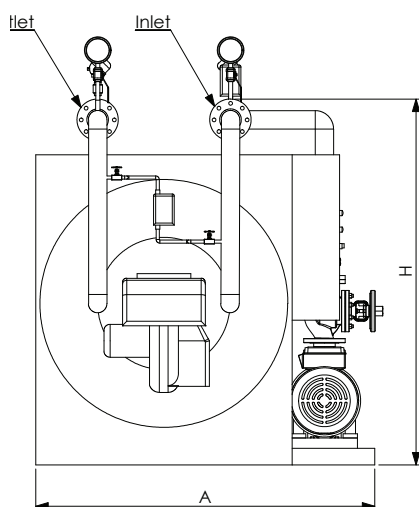
The advantage of the MELGARI SRH forced steam generator is to reach the required operation conditions in only a few minutes and to be totally safe against the water side explosion.

The steam generator MELGARI , model SRH is a monobloc version, horizontal or vertical, pressurized with three smoke passes, the tube bundle (coil) is rolled in a continuous spiral. The first smoke pass takes place into the combustion chamber and the two others are between the tube bundle.

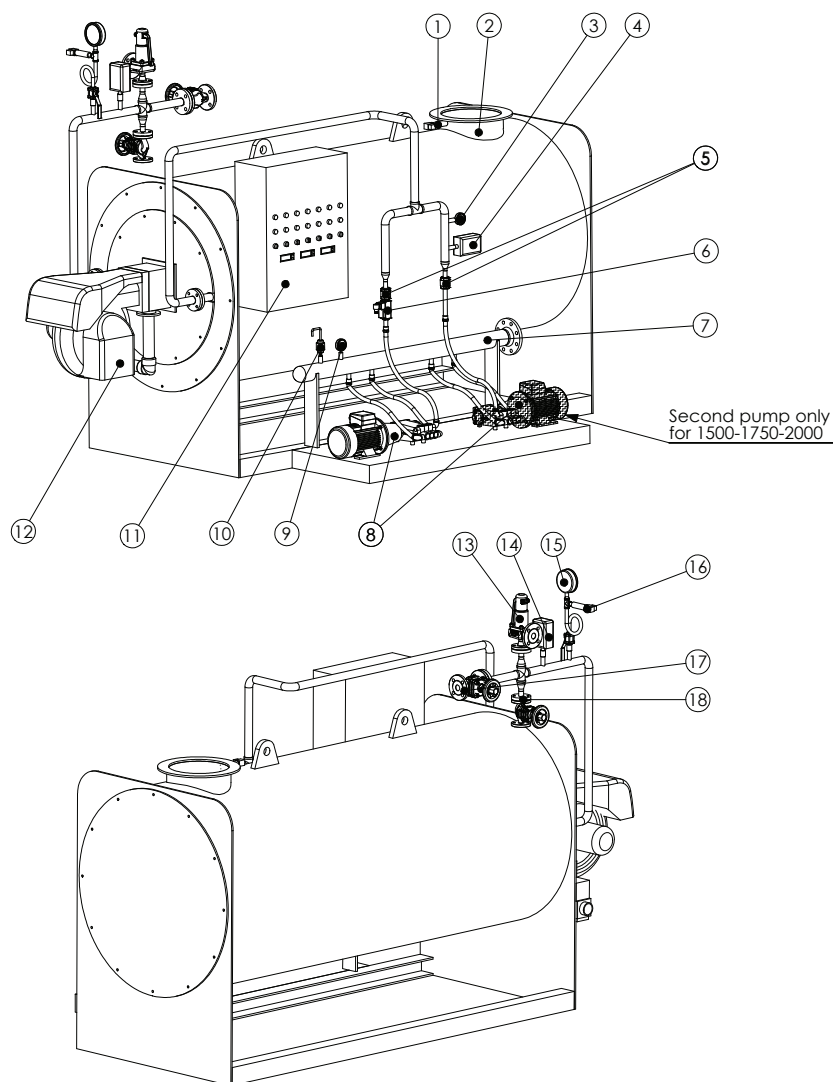
The construction is performed according to the European directive PED 97/23 EC and calculation code EN 12952 and the all joints are accurately electric welded and executed with manual /automatic process.



SRH - TECHNICAL DATA



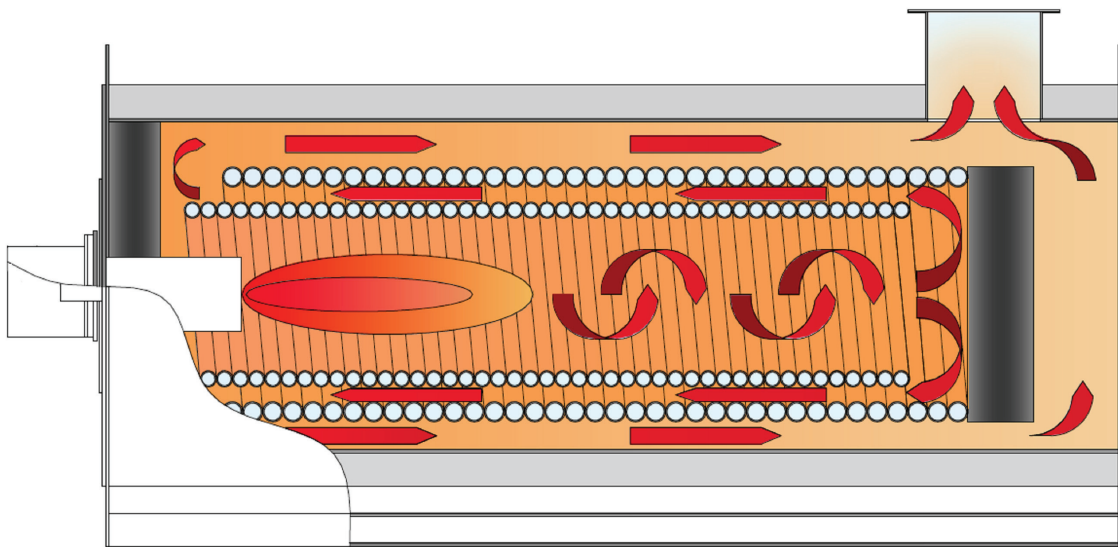
Type	Dimensions					Connections			Steam production	Nominal capacity		Stamped pressure	Back pressure	Total capacity	Empty weight
	A	L	H	Lb	C	Ø	Steam outlet	Start up / Purge	kg/h	kCal/h	kW	bar	mbar	Liters	Kg
	mm	mm	mm	mm	mm	mm	DN	DN							
100	1.050	1.050	1.500	1.330	210	120	15	15	100	100.000	70	12	1	20	600
150	1.150	1.100	1.500	1.380	210	120	15	15	150	150.000	105	12	1,5	31	650
300	1.400	1.500	1.800	1.800	230	160	15	15	300	300.000	209	12	2	40	700
500	1.600	1.550	2.000	1.858	230	160	25	15	500	500.000	349	12	3,5	59	750
800	1.700	2.100	2.000	2.740	250	200	25	15	750	800.000	523	12	3,5	130	900
1.000	1.750	2.500	2.100	3.340	275	250	32	15	1.000	1.000.000	698	12	4,5	211	1.100
1.250	1.770	2.700	2.150	3.540	275	250	32	20	1.250	1.250.000	872	12	6	233	1.150
1.500	1.820	3.000	2.200	3.840	325	350	40	20	1.500	1.500.000	1.047	12	7	261	1.650
2.000	1.820	3.530	2.200	4.370	325	350	65	20	2.000	2.000.000	1.395	12	8	321	2.050



1	Smoke thermcouple
2	Smoke outlet
3	Manometer
4	Water pressure switch
5	Check valve
6	Flow switch
7	Water manifold
8	Pump
9	Manometer
10	Event
11	Electrical cabinet
12	Burner
13	Safety valve
14	Pressure switch
15	Manometer
16	Pressure trasducer
17	Steam outlet
18	Starting up / Purge valve

SRH

SMOKE PASSES DETAILS



Horizontal Coil steam boiler, for rapid steam production.



SRV

Vertical Coil steam boiler, for rapid steam production.
Steam output from 100 Kg/h up to 4.000 Kg/h from 12 up to 30 bar.



The steam generator MELGARI , model SRV is a forced circulation steam boiler according to which the water is forced by one or many pumps and circulates into the pipe (coil) that represents the heating surface.

It has been especially designed for the combustion of both liquid and gaseous fuels and is supplied with the accessories according to the currently norms for an automatic functioning.

The advantage of the MELGARI SRV forced steam generator is to reach the required operation conditions in only a few minutes and to be totally safe against the water side explosion.

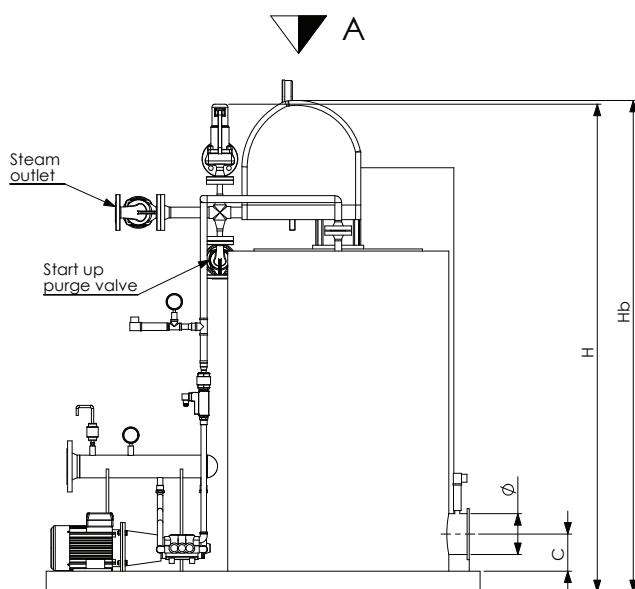
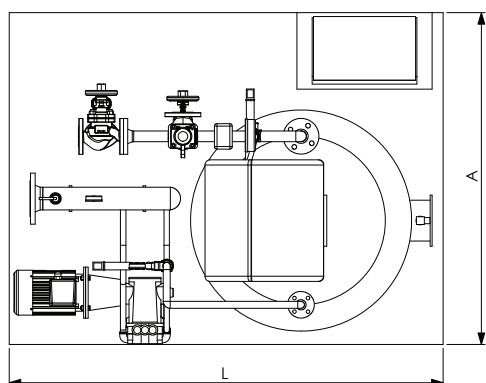
The steam generator MELGARI , model SRV is a monobloc version, horizontal or vertical, pressurized with three smoke passes, the tube bundle (coil) is rolled in a continuous spiral. The first smoke pass takes place into the combustion chamber and the two others are between the tube bundle.

The construction is performed according to the European directive PED 97/23 EC and calculation code EN 12952 and the all joints are accurately electric welded and executed with manual /automatic process.

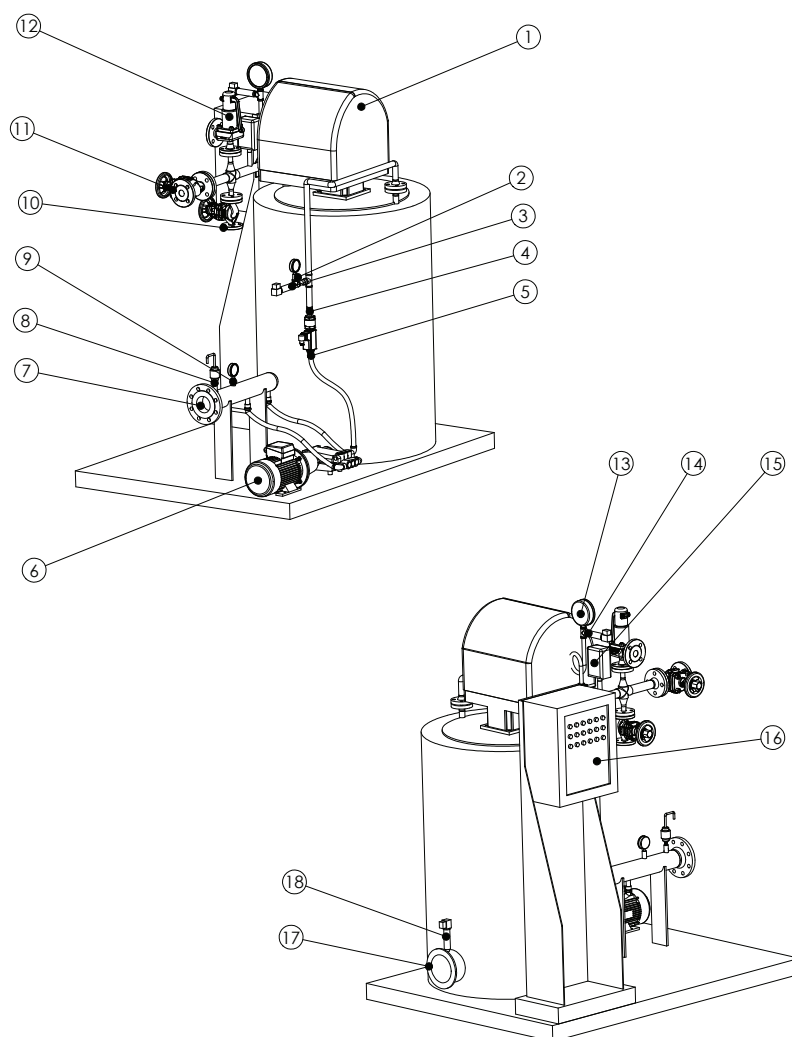


SRV - TECHNICAL DATA

View A



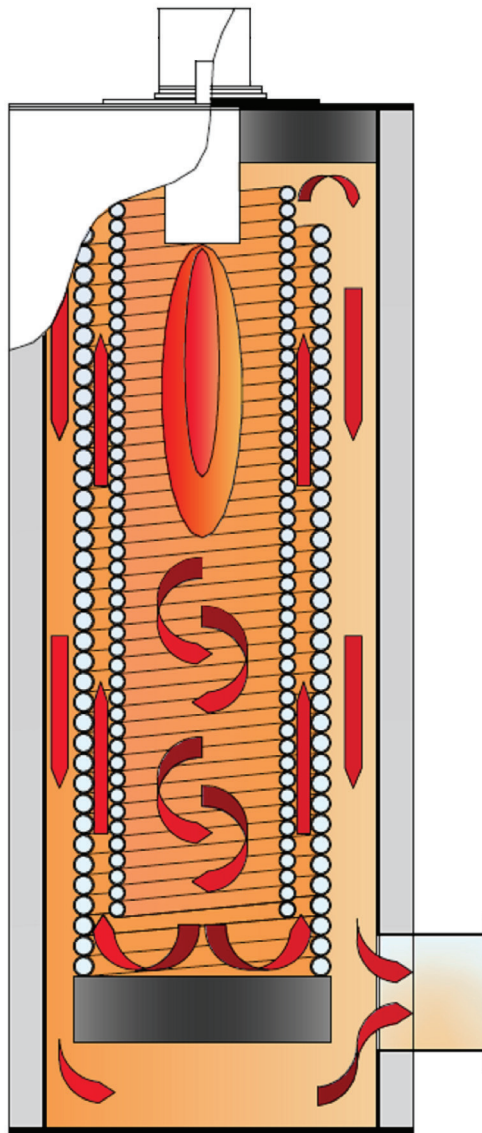
Type	Dimensions					Connections			Steam production kg/h	Nominal capacity		Stamped pressure bar	Back pressure mbar	Total capacity Liters	Empty weight Kg
	A	L	H	Hb	C	Ø	Steam outlet DN	Start up/ Purge DN		kCal/h	kW				
	mm	mm	mm	mm	mm	mm									
100	850	1.250	1.540	1.540	210	120	15	15	100	100.000	70	12	1	20	700
150	850	1.250	1.590	1.590	210	120	15	15	150	150.000	105	12	1,5	31	750
300	1.100	1.500	1.990	1.990	230	160	15	15	300	300.000	209	12	2	4	800
500	1.300	1.700	2.040	2.040	230	160	25	15	500	500.000	349	12	3,5	59	850
800	1.300	1.700	2.590	2.740	250	200	32	15	750	800.000	523	12	3,5	130	1.000
1000	1.400	1.800	2.990	3.440	275	250	32	15	1.000	1.000.000	698	12	4,5	211	1.200
1250	1.450	1.850	3.190	3.540	275	250	32	20	1.250	1.250.000	872	12	6	233	1.250
1500	1.700	1.900	3.490	3.840	325	350	40	20	1.500	1.500.000	1.047	12	7	261	1.750
2000	1.700	1.900	4.020	4.370	325	350	50	20	2.000	2.000.000	1.395	12	8	321	2.150



1	Smoke thermcouple
2	Smoke outlet
3	Manometer
4	Water pressure switch
5	Check valve
6	Flow switch
7	Water manifold
8	Pump
9	Manometer
10	Event
11	Electrical cabinet
12	Burner
13	Safety valve
14	Pressure switch
15	Manometer
16	Pressure trasducer
17	Steam outlet
18	Starting up / Purge valve

SRV

SMOKE PASSES DETAILS



Horizontal Coil steam boiler, for rapid steam production.